

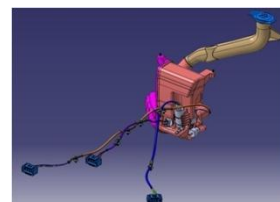
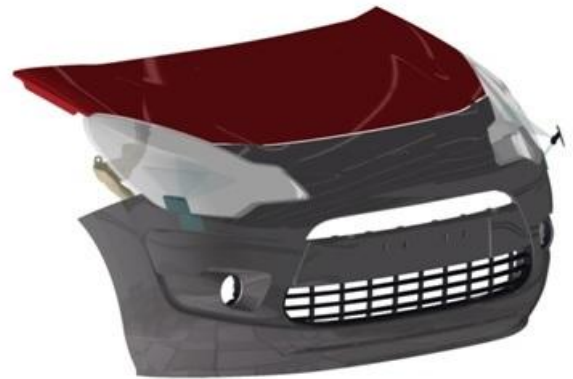
**Surf Engineering** is an Industrial Engineering Services company specialized in **Industrial Design, Product Life Cycle Management and Training** related.

- ❑ We know **Automotive, Aeronautical, Rail way and Industrial Machinery** sectors, and we are able to work in other sectors.
- ❑ We have a professional team with over **20 years of experience**, dynamic, close group, and willing to innovate and learn.



## What do we do?

- ❑ **CAD design in 2D and 3D** with the software:
  - CATIA V5 / V6
  - SolidWorks
  - AutoCAD
  - Inventor
  - PTC Creo Parametric
  - Solid Edge
  - Siemens NX
- ❑ **CAD design:**
  - CATIA
  - Electrical Harness Installation 2 (EHI)
  - AutoCAD Electrical
  - EPLAN Electric
- ❑ **CAM design**
  - MasterCAM
  - CAM CATIA v5
  - CAM NX
- ❑ **Machinery design:**
  - Pharmaceutical industry
  - Food industry
  - Packaging
- ❑ **Design for Product Life Cycle Management (PLM):**
  - Dassault Systems Enovia
  - Siemens Teamcenter Engineering
  - PTC Windchill
- ❑ **CAE design**
  - Ansys
  - Nastran
  - Patran



- ❑ **Training** CAD | CAM | CAE | PLM, ... Tailored-training. Tutoring | Coaching

## And we also do

- ❑ **3D Scanning for reverse engineering.** Creation of models 3D CAD from physical objects
- ❑ **Adaptation of the design for 3D printing.**
- ❑ **Buildings design, industrial plants. Building Information Modeling(BIM)**
- ❑ **Industrial Consulting**
  - On the basis of the analysis and the study of operations, processes and products, changes are proposed to optimize resources and costs, improve results and profits, change the organization...
- ❑ **Projects Management:**
  - Microsoft Project
  - Siemens TeamCenter Project Management
- ❑ **Support and Maintenance**
  - Services tailored of the needs of the customers to help them having his systems working properly
- ❑ **Outsourcing services**
- ❑ **Project management Office as a service (PMOaaS)**
  - Our specialized team develops the commissioned functions applying the final customer's methodology of work, what provides the possibility to generate synergies with other projects. Temporary or permanent service.
- ❑ **Industrial computing**
  - PLC's programming (Siemens, Allen-Bradley, Schneider Electric, Omron, Rockwell Automation). SCADA. Interface Man-Machine (HMI)
  - Programming of conventional and collaborative industrial robots (ABB, Kuka, Fanuc, Universal Robots).
- ❑ **Software integration**
- ❑ **Industry 4.0**



Fuente: AMETIC

### **Surf Engineering, S.L.**

Portugal street, 29, local 1, 08027, Barcelona  
Colibrí street 7, 28904, Getafe (Madrid)  
Spain

Phone: +34 932 435 392

<http://www.surfensl.com> | [info@surfensl.com](mailto:info@surfensl.com)